

WinS ILE

Evaluation

Klaesener-Metzner, Nicole

Side talks and bus rides

August 2023

unicef 
for every child



First let's hear from **you!**

How would you evaluate a
learning event like the ILE?

Put your answers in the chat



Why?

01.

Collect evidence to ensure that you are meeting your aims and goals with the event.

02.

Evaluation should provide strong evidence regarding its efficacy and impact.

03.

Course correct and adapt future events
Based on learnings

Research Questions

The extent to which the WinS ILE ***generated momentum and political commitment*** on WinS among participating countries.

The extent to which the WinS ILE ***facilitated learning among participating countries***.

The ***relevance of the WinS ILE topics to the national and global agenda on WinS***, and new topics that should be added to ensure their relevance.

The ***effectiveness of the structure of the WinS ILE*** and how it can be improved to accelerate learning.

The ***monitoring of the learning from the WinS ILEs***, and the indicators and data collection methods that are suitable to better monitor the learning.

Impact: the extent to which the WinS ILE generated momentum and political commitment on WinS among participating countries...



Self-reporting by countries shows progress in WinS via review of EE Matrices in six countries

Country	2016	2017	2019	2016	2017	2019	2016	2017	2019	2016	2017	2019
	Red			Yellow			Green			Blue		
Bangladesh	2	0	0	14	7	5	0	9	11	0	0	0
Cambodia	1	1	0	12	11	4	3	4	10	0	0	2
Fiji	6	0	0	9	8	0	1	8	14	0	0	2
Nepal	2	0	2	9	7	6	5	9	1	0	0	7
Philippines	0	0	0	3	0	0	13	5	3	0	11	13
Timor-Leste	1	1	1	6	6	6	8	8	8	1	1	1
Total	12	2	3	53	39	21	30	43	47	1	12	25
in %	13%	2%	3%	55%	41%	22%	31%	45%	49%	1%	13%	26%

Red: no progress
 Yellow: constrained
 Green: good progress / on track
 Blue: completed

Source: EE matrices submitted by countries for the WinS ILE

National WASH in Schools Estimates						
Country	2016			2021		
	Basic water service	Basic sanitation service	Basic hygiene service	Basic water service	Basic sanitation service	Basic hygiene service
Bangladesh	74	59	44	81	57	56
Cambodia	no data	39	41	76	32	68
Fiji	88	76	61	87	76	70
Nepal	47	0	no data	47	no data	no data
The Philippines	50	39	46	45	74	61
Timor-Leste	no data	no data	no data	70	no data	60

Sources: WHO/UNICEF JMP

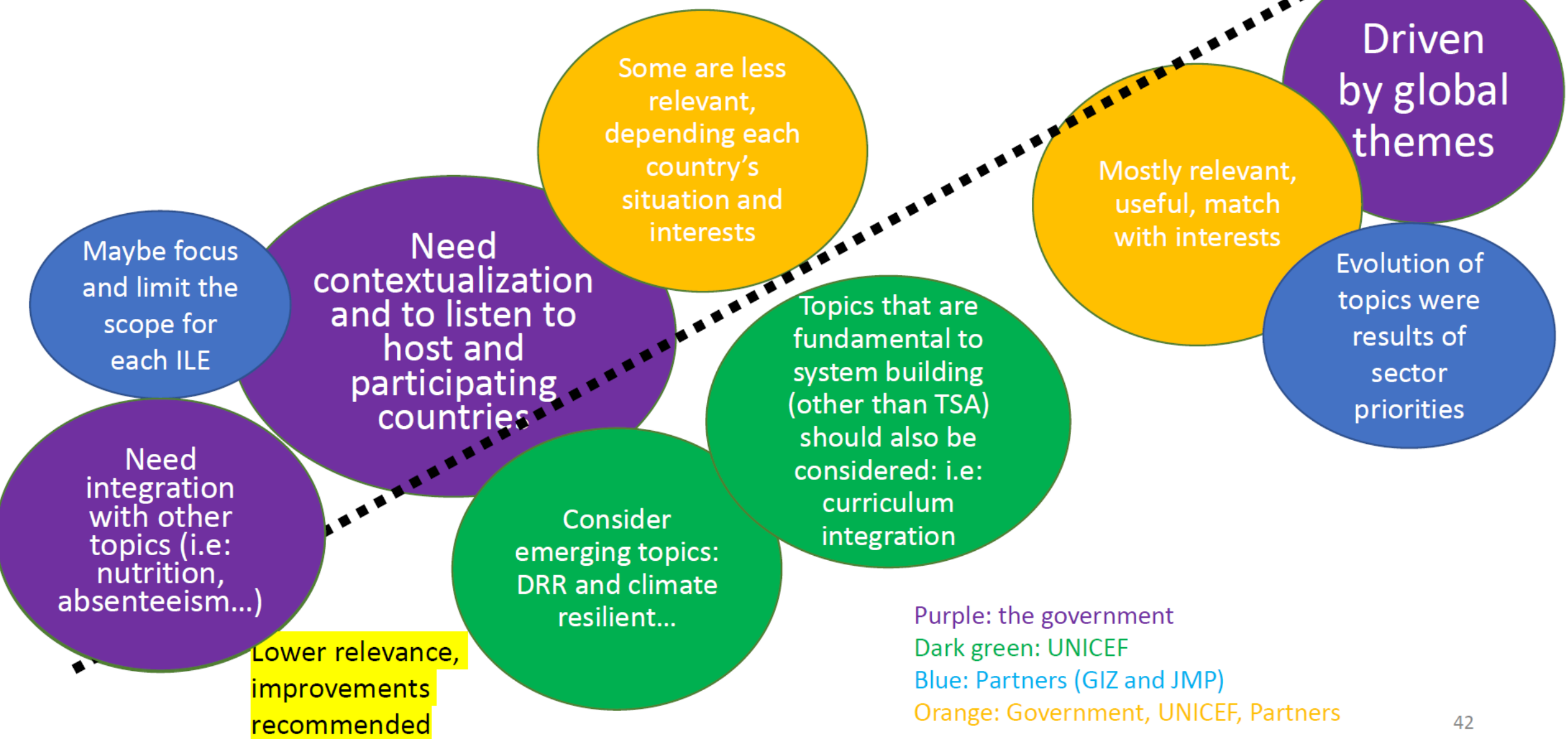
Color coding may be subjective, but is indicative of progress areas.

Relevance: the extent to which the WinS ILE facilitated learning among participating countries, the relevance of topics to the national and global agenda, and new topics ...



Relevance: Topics are relevant. However they need to evolve based on countries' changes and priorities.

High Relevance



Purple: the government
Dark green: UNICEF
Blue: Partners (GIZ and JMP)
Orange: Government, UNICEF, Partners

Effectiveness: the effectiveness of the structure of the WinS ILE and how it can be improved to accelerate learning...



In terms of effectiveness, the structure of the **key learning activities were generally aligned with participants' interests**. Country consultations and field visits, combined with informal interactions during **breaks and bus rides** were the valued opportunities to exchange. However, there are suggestions to improve the format by using **more participatory or two-way** communication activities; professionalizing the organization of the ILE with a permanent secretariat, and involving host-country perspectives more intentionally in the programme. Furthermore, a careful selection of country delegates based on their expertise was deemed important, as **technical exchanges** are at the centre of what the ILE is about.

WinS ILEs are hard to measure they **highlight** and **emphasize** the importance of WinS across ministries and sectors and the **informal aspects** are key to their impact on participants.



1000+

In person participants



100+

Speakers, almost half women

Design													
Presentations, short videos and Q&A	Plenary discussion; group work	Presentations; moderated discussion	School visit and round-table discussion with schools and local stakeholders	moderated plenary discussion; group work; marketplace; moderated discussion	Presentation	Presentation	Presentations; country group work	Presentations, and group feedback	networking dinner				
Presentations; Q&A; panel discussion	Presentations; Q&A	Presentations; short videos; Q&A	School visits and discussion with the schools	Group work; Presentations; plenary discussion	Group work; presentations; plenary discussion; Q&A	Group work; presentations; plenary feedback	Group work and poster display of take home message	Country poster display					
Presentations and Q&A	Presentations and Q&A; country poster display	Presentations and short video; Q&A	Presentations and Q&A	Presentations and Q&A	Presentations	School visits and discussion with the schools, socializing event in the evening	Group work, presentations and plenary discussion	Group work and plenary presentation					
Field visit and discussion with schools and local authorities; Panel discussion	Moderated plenary discussion	Presentations; moderated discussion	Presentations; moderated discussion	Presentations; moderated discussion	Presentations; moderated discussion	Presentations; moderated discussion	Breakout room; group consultation	Countries work on their take-home actions	closing dinner and social events (music, cultural performance...)				
Short videos; Q&A	Presentations and moderated discussion	Presentations; Recorded video	Presentations; moderated discussion	Presentations; moderated discussion	Field visit and discussion with schools; Panel discussion	moderated plenary discussion	Countries work on their take home message and actions	Poster presentation					
Presentations; Q&A and moderated discussion	Presentations; Q&A and moderated discussion	Presentations; Q&A and moderated discussion	Presentations; Q&A and moderated discussion	Presentations; Plenary feedback and discussion	Presentations and discussion on significant insights	Presentations; Q&A and facilitated group discussion	Presentation; Moderated panel discussion	Moderated panel discussion; Q&A; feedback on key take-away and wrap-up; interactive exercise	Moderated panel discussion; Q&A; feedback on key take-away and wrap-up; group work; plenary feedback and discussion	school visit and discussion with schools and representative s of the DoE offices at the division and regional levels	Moderated plenary discussion; videos; individual and table group work; country group consultation	Presentations	
Presentation	Presentation; chatbox discussion	Presentations; country consultations in group of two to three countries	Presentation	Presentations; chatbox discussion									

Yellow: one-way learning: presentations, Q&A, panel discussion, videos, poster display, marketplace

Orange: mixed learning: group work, plenary discussion

Green: two-way learning: fieldwork; group interaction with schools or local authorities; group work plus discussion; social events

1000+

Sessions on “all” WASH topics

Thank you.

For questions please reach out:

nklaesener@unicef.org